



# SE VENDE o SE ALQUILA

## Alquiler 7.000 euros/mes

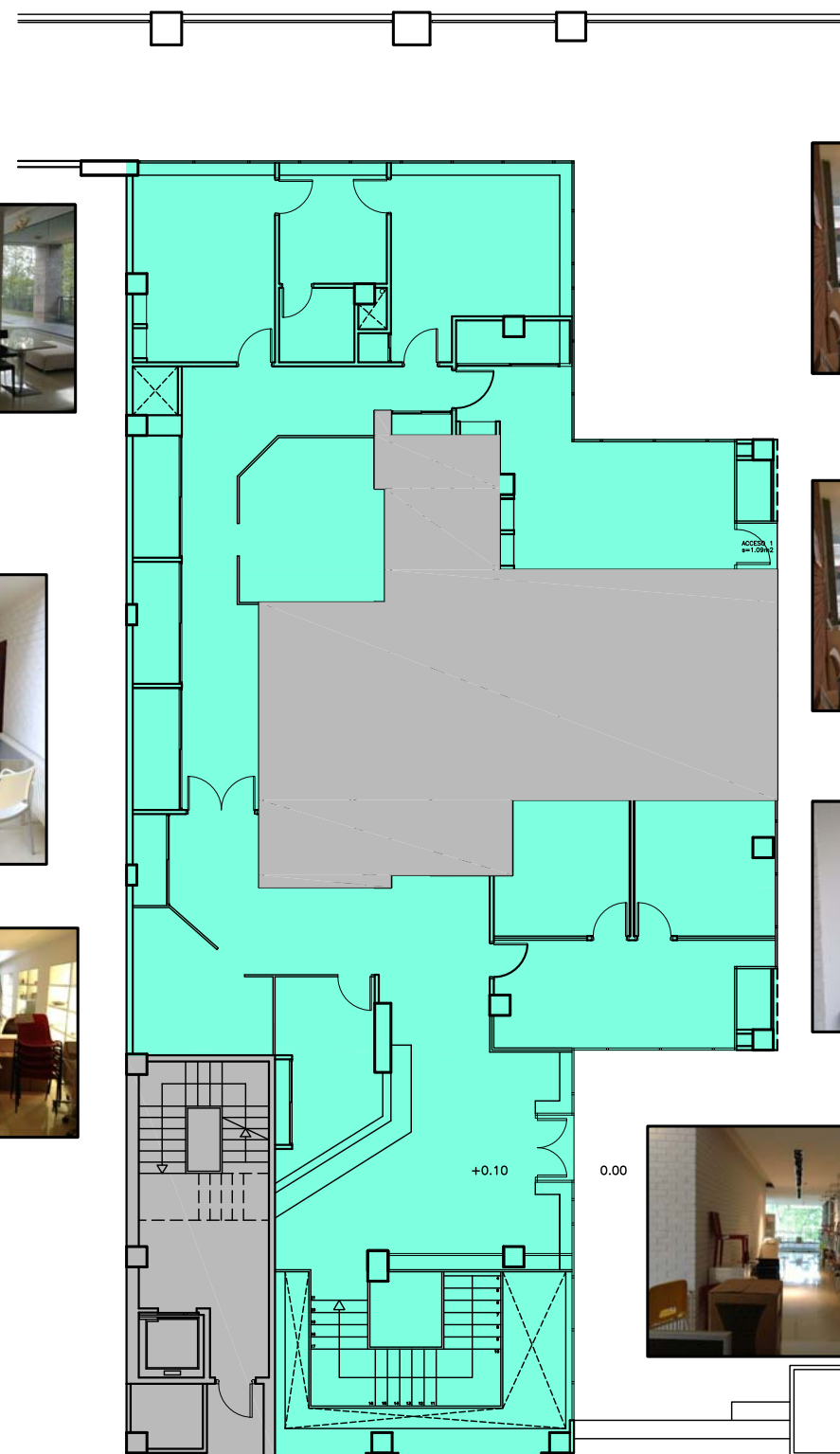
### LOCAL EN DOS NIVELES 940.24 M2



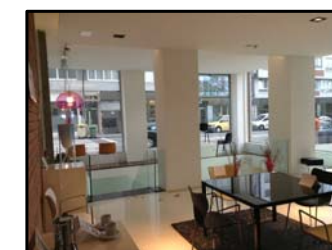
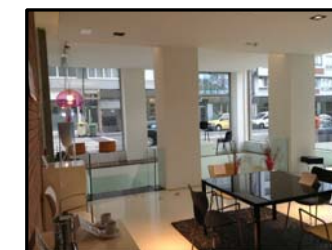
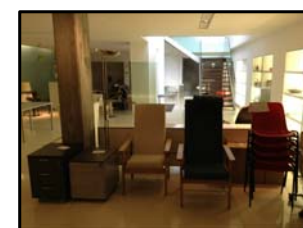
FACHADA A BOLEVARD



PLANTA BAJA  
692.67 M2



ENTREPLANTA  
247.57 M2



## PROPUESTA LOCAL DIAFANO PLANTA INFERIOR