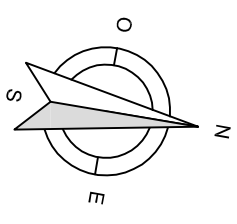
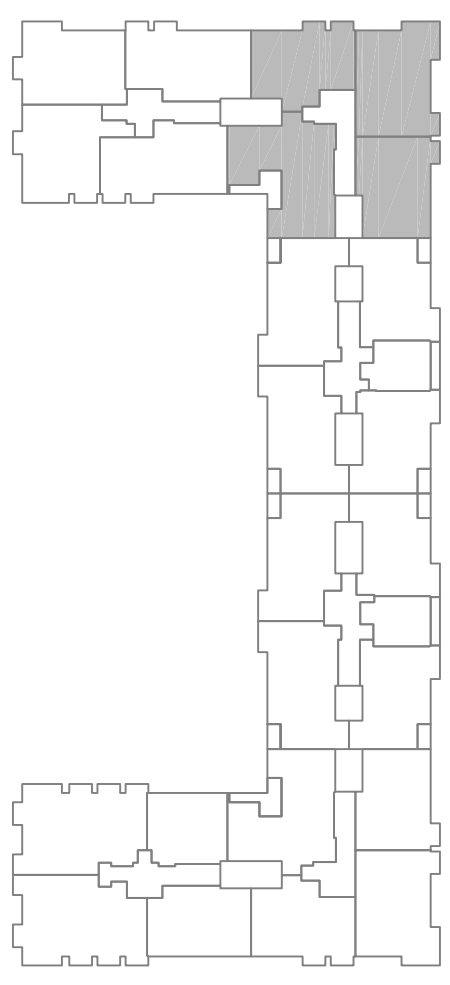


PORTAL 5		VIV. A	VIV. B	VIV. C	VIV. D
PLANTA TIPO (2^a-4^a)					
SUP. ÚTIL VIV. + TRASTERO (m²)		80,27	100,87	79,44	93,22
SUP. CONSTR. VIV. + TRAST. + P.P.E.C. (m²)		97,24	123,35	95,68	112,09
TERRAZAS (m²)			12,10		



PLANTA TIPO

